

AMRAPUR TAILORS

AMRAPUR TAILORS

SINCE 1960s

Contact #: (+668) 0894567251 / (+668) 0813433930 / (+668) 0884639027 /
(+662) 022871036 Ext. 170

Email ID: amrapurtailors@hotmail.com ; amrapurtailors.th@gmail.com

Facebook: www.facebook.com/amrapurtailors

Instagram: www.instagram.com/amrapurtailors

Website: www.amrapurtailor.com

All measurements are to be written in inches (in).

FRONT JACKET LENGTH
(LOWER)



measure from lower end of
shoulder seam to length desired

FRONT JACKET LENGTH
(HIGHER)



measure from the upper end of the
shoulder where it joins the neck to
the length desired

JACKET LENGTH IN BACK



measure from lower collar seam to
length desired

OVERCOAT LENGTH



measure from the upper end of the
shoulder where it joins the neck to
the length desired

CHEST



measure around body well up under
armholes

STOMACH



measure around stomach at widest
point

WAIST



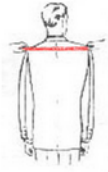
measure around waistline at which
you wear your pants

HIPS



measure around hips at widest
point of seat (measure somewhat
loosely)

FULL SHOULDERS



measure from one end of shoulder where it joins the sleeves to the other end

SLEEVES



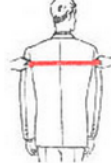
measure from shoulder seam to length desired

FRONT



measure across the top of chest from joining of one arm to joining of other

BACK



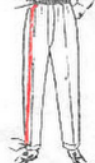
measure across the back from joining of one arm to joining of another

NECK



measure around neck

TROUSERS LENGTH



measure from top of waist line to bottom of cuffs

TROUSERS CROTCH



measure from the top of the waistband in front to the top of waistband in the back

TROUSERS INSEAM



measure from crotch to bottom of cuffs

THIGHS



exact

required

measure around thighs at widest point

TROUSERS CUFFS



measure width around the cuff

VEST LENGTH



measure from lower collar seam to length desired



Normal Posture



Erect



Forward Stoop



Forward Stomach



Stout